

Expedia | EQC Connection

Once you have enrolled with Expedia Partner Central, setup your Room Type and Property Information and communicated the necessary information to your Expedia Market manager, see [Expedia | Activate Connection](#), then you will need to establish an Expedia Quick Connect (EQC) Connection. This is the last step in the activation process.

If you need to enroll with Expedia Partner Central, go to [Expedia | New Account Setup](#)

To find more information about Expedia connectivity solutions please visit <http://www.expediaquickconnect.com/>.

To establish the EQC connection, follow these steps:

Login to www.expediapartnercentral.com, should you need help with this please reach out to hothelp@expedia.com

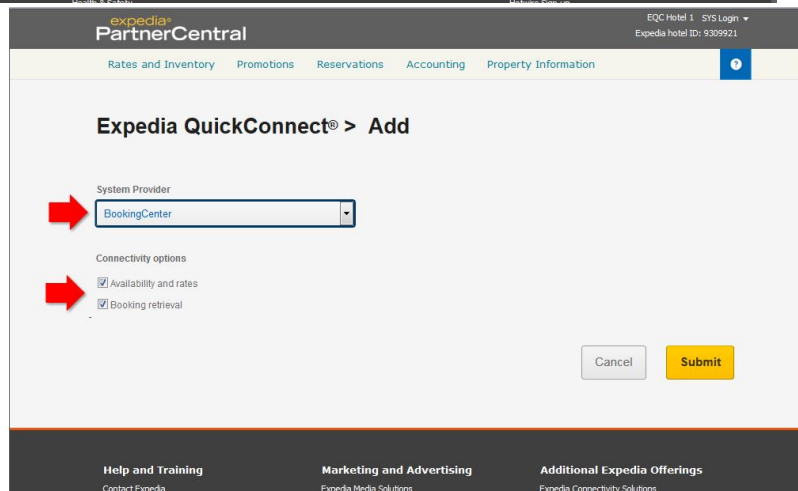
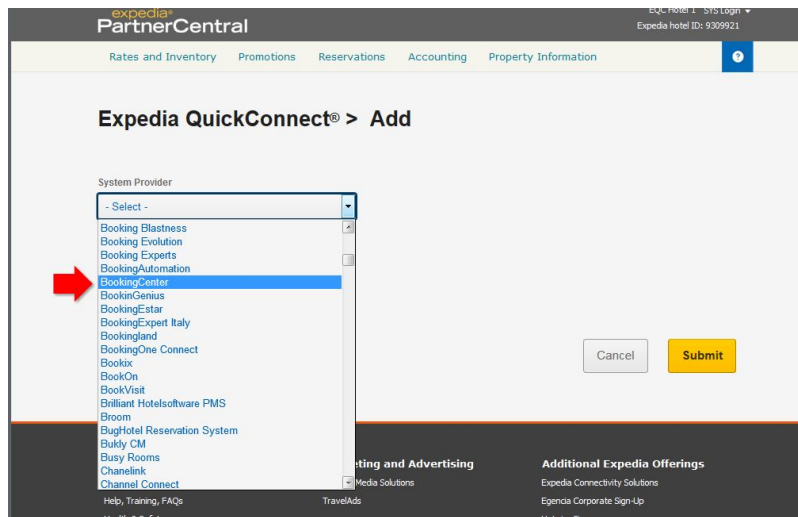
Once logged into EPC, select your hotel.

- Navigate to the the Rates and Inventory tab
- Select **Expedia Connectivity Settings**.

The screenshot displays the Expedia Partner Central (EPC) interface. On the left is a dark sidebar with a navigation menu. The 'Rooms and Rates' section is expanded, showing options like 'Manage Rates and Availability', 'Bulk Availability', 'Bulk Rates and Restrictions', 'Channel Comparisons', and 'View Change History'. The 'EXPEDIA CONNECTIVITY SETTINGS' option is highlighted with a red rectangle. Other sections in the sidebar include 'SETUP', 'MORE TOOLS', 'OTHER EXPEDIA CHANNELS', 'Marketing', 'Reservations', and 'Guest Relations'. On the right, the main content area shows 'Today's Opportunities' with a card for 'Accelerators can help move e...', followed by 'Reservations' and 'Accounting' sections. At the bottom left, there is a grey box labeled 'Expedia Direct Connection'.

If you DO NOT have an Expedia Quick Connection (EQC) (see next step if you need to change system providers)

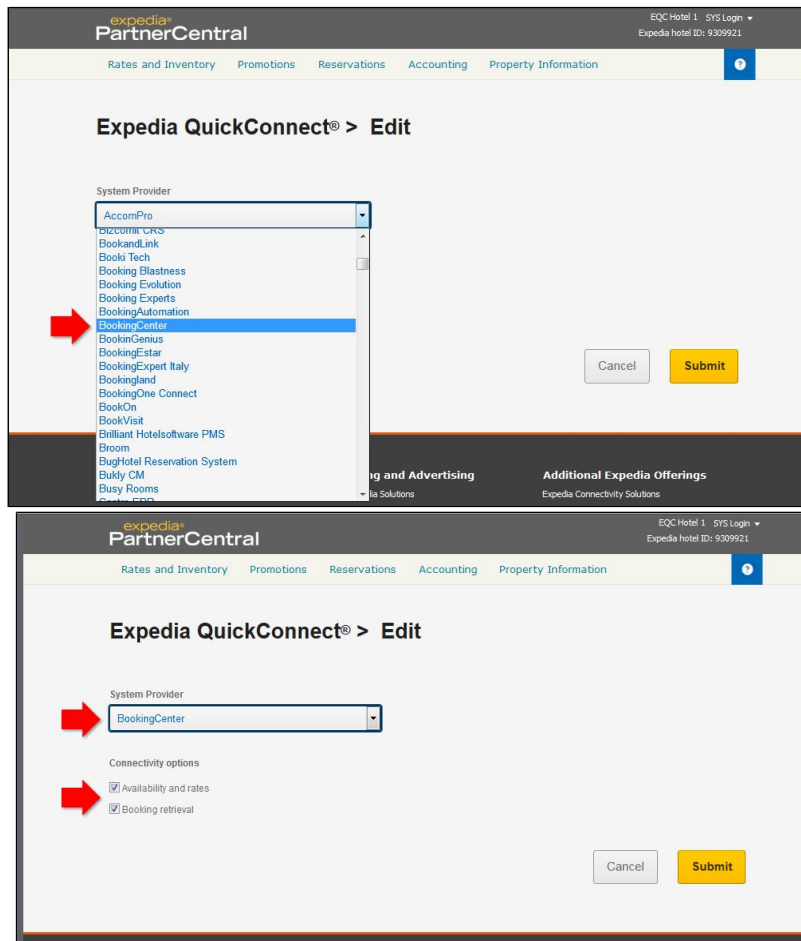
- Select **BookingCenter** from the System Provider drop down list
- Select the Connectivity Options: "Availability and Rates" and "Booking Retrieval" (AR, BR).
- In the display view, BookingCenter should be listed as the System Provider and "Availability and Rates" and "Booking Retrieval" selected.
- Click Submit.
- Once you have completed the Quick Connection, BookingCenter will receive notification and complete mapping.



Click images to enlarge

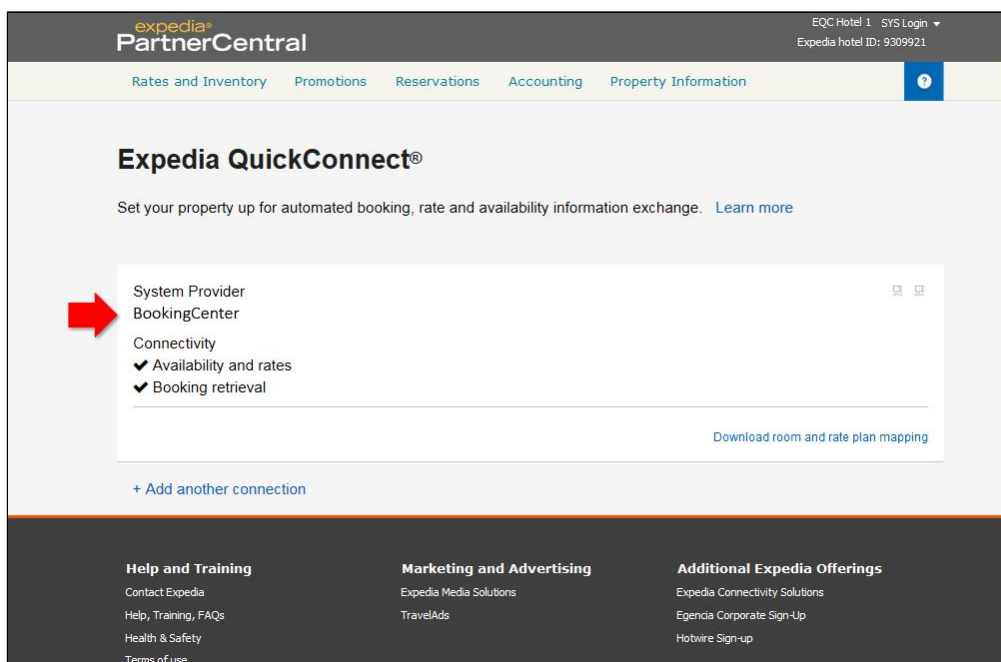
If you DO have an Expedia Quick Connection (EQC) and need to change to BookingCenter

- Click the Edit Icon to modify connection.
- Select **BookingCenter** from the System Provider drop down list
- Select the Connectivity Options: "Availability and Rates" and "Booking Retrieval" (AR, BR).
- Click Submit.
- Once you have completed the Quick Connection, BookingCenter will receive notification and complete mapping.



Click images to enlarge

In the display view, you should see BookingCenter listed as the System Provider and "Availability and Rates" and "Booking Retrieval" selected.



Click image to enlarge image